



August 1996

EMBARGOED UNTIL 11:30 AM THURSDAY 8 AUGUST 1996

Tasmanian Statistical Indicators

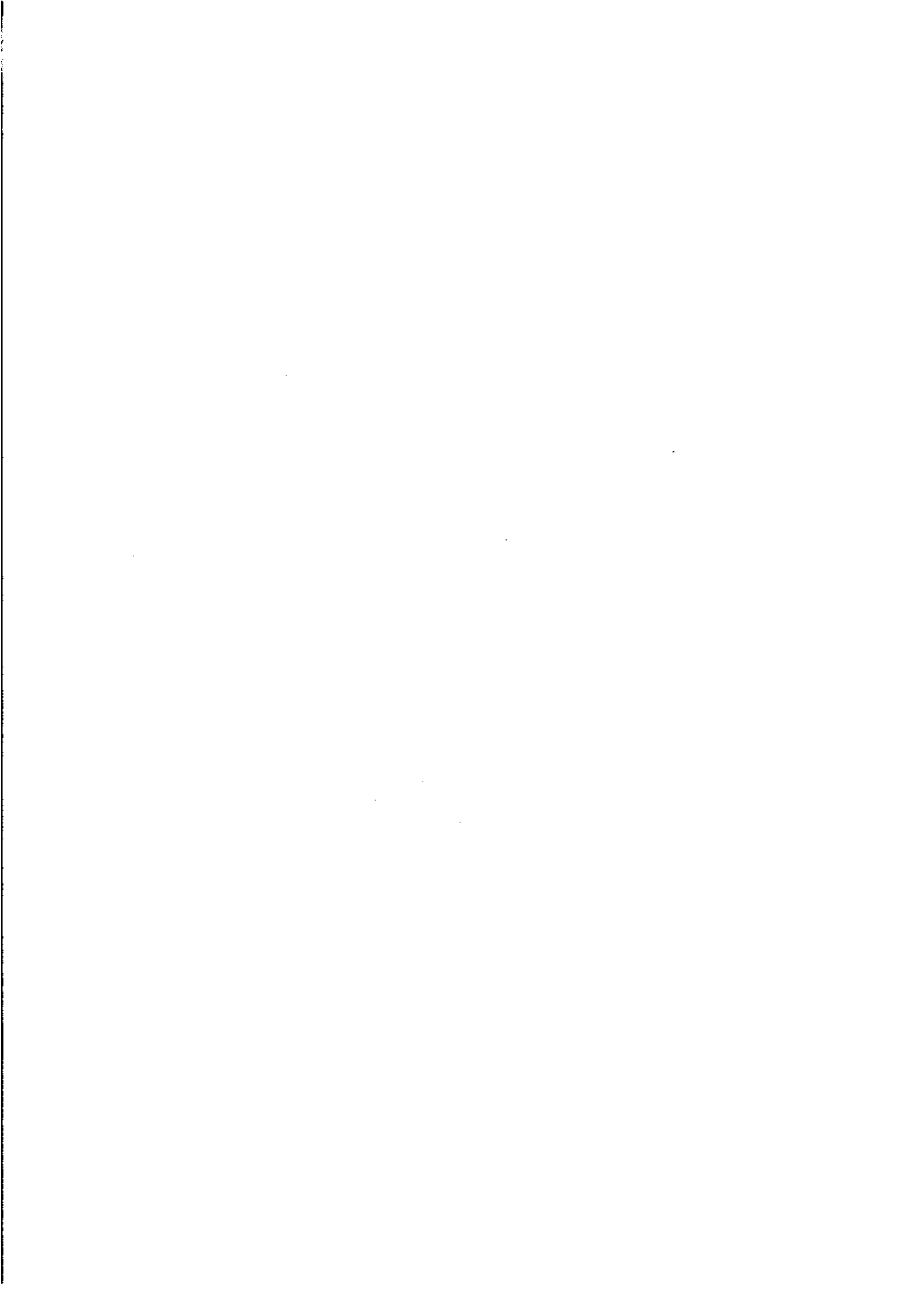
Statistics

1995	1996	1997	1998	1999	2000	2001	2002	2003	2004	2005	2006	2007	2008	2009	2010	2011	2012	2013	2014	2015	2016	2017	2018	2019	2020	2021	2022	2023	2024	2025		
...



**TASMANIAN STATISTICAL INDICATORS
AUGUST 1996**

**Denis W. Rogers
Deputy Commonwealth Statistician
and Government Statistician of Tasmania**



CONTENTS

MAIN FEATURES	Page
TABLES	v
1 Population	1
2 Births, deaths and marriages registered	1
3 Labour force status—seasonally adjusted and trend series	2
4 Labour force status by region and Tasmania, males	3
5 Labour force status by region and Tasmania, females	4
6 Labour force status by region and Tasmania, persons	5
7 Teenage labour market	6
8 Employed persons by occupation	7
9 Employed wage and salary earners, sector and industry	8
10 Average hours worked	8
11 Job vacancies	9
12 Industrial disputes	9
13 Average weekly earnings of employees	10
14 Weekly award rates of pay indexes	10
15 Summary of annual movements in wages and prices	11
16 House price index numbers, Hobart	11
17 Consumer price index	12
18 Price index of materials used in building other than house building	13, 14
19 Miscellaneous indicators of production (production of selected commodities)	15
20 Livestock slaughtering, numbers	16
21 Livestock slaughtering—seasonally adjusted and trend series	16
22 Meat production, Tasmania	17
23 Principal mineral concentrates produced	17
24 Sawmills and plywood mills: logs delivered and timber produced	18
25 Chipping and grinding of wood	18
26 Logs delivered for milling or chipping	19
27 Building approvals	20
28 Dwelling commencements	20

INQUIRIES

- *for further information about statistics in this publication and the availability of related unpublished statistics, contact the Hobart office of the ABS on (002) 20 5800.*
- *for information about other ABS statistics and services, please refer to the back page of this publication.*

	Page
29 Banking statistics	21
30 Private new capital expenditure by type of asset	21
31 Passenger arrivals and departures	22
32 Passenger arrivals by air and sea into Tasmania	22
33 Accommodation statistics	23
34 Registrations of new motor vehicles	24
35 Turnover of retail establishments at current prices	24
36 Major Statistical Indicators—Australian and State figures	25
EXPLANATORY NOTES	26

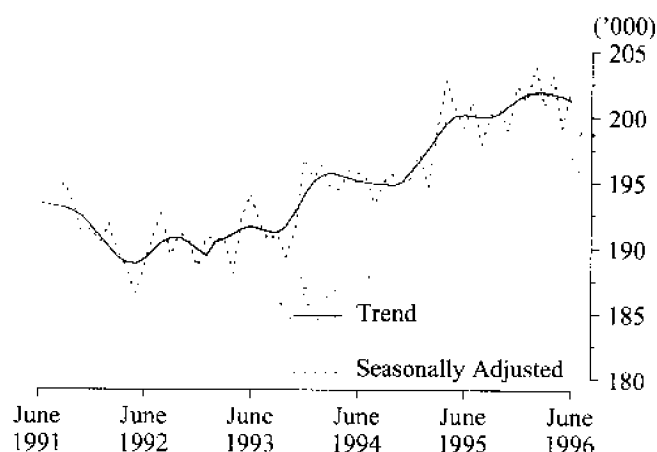
MAIN FEATURES

EMPLOYMENT

States' trend series comparisons

The Australian and State *trend series* comparisons are given on page 25. There was an increase of 0.5% in Tasmania's employment over the year to June 1996. The largest percentage increases in employment were in Victoria (1.0%) and Queensland (1.0%), followed by New South Wales (0.9%) and South Australia (0.9%). There was no change in Western Australia's employment.

EMPLOYMENT, TASMANIA



Regional Tasmania's original series figures

In the Hobart and Southern Statistical Divisions the estimate of *unadjusted* employment in June 1996 was 98,900 and compares with 101,700 in June 1995. The estimate of *unadjusted* employment in the Northern Statistical Division in June 1996 was 58,000 and compares with 54,200 in June 1995. The estimate of *unadjusted* employment in the Mersey-Lyell Statistical Division was 44,300 in June 1996, and compares with 42,600 for June 1995.

(See tables 3-8, pages 2-7.)

UNEMPLOYMENT

Tasmania's trend series figures

The Tasmanian provisional *trend series* estimate of 23,900 unemployed persons in June 1996 was an increase of 2,300 on the figure for June 1995 of 21,600. The provisional *trend series* estimate of the unemployment rate of 10.6% in June 1996 compares with 9.7% in June 1995.

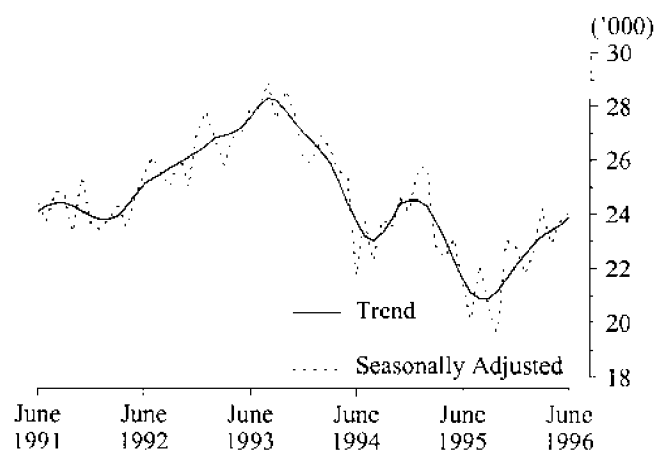
(See tables 3-8, pages 2-7.)

THE LABOUR FORCE

Tasmania's trend series figures

In June 1996 there was an *unadjusted* estimate of 368,400 civilian Tasmanians aged 15 or more. There were an estimated 225,200 persons (based on *trend series* estimates) in the labour force. The estimate of the labour force participation rate in June 1996 was 61.1%, compared with 60.4% in June 1995.

UNEMPLOYMENT, TASMANIA



For males, the *trend series* estimate of the participation rate was 72.4%, compared with 70.8% for June 1995. For females, the *trend series* estimate of the participation rate was 50.2%, compared with 50.3% in June 1995. (See table 3, page 2.)

EMPLOYED WAGE AND SALARY EARNERS

In March 1995 there were approximately 137,600 employed wage and salary earners in Tasmania. In March 1993 the figure was 147,100 employed wage and salary earners.

In February 1995 the Tasmanian public sector accounted for 31.7% of all employed wage and salary earners. Overall, the category Community services had the highest industry representation, 27.8%, compared with the equivalent figure of 24.9% recorded in February 1993. The next highest industry grouping was Wholesale trade and Retail trade (19.4%, compared with 20.8% in February 1993) and Manufacturing (15.2%, compared with 14.8% in February 1993).

In February 1995, women made up 45.5% of employed wage and salary earners. In February 1993, the equivalent figure was 44.8%. (See table 9, page 8.)

AWARD RATES OF PAY INDEXES

The annual movement, from May 1995 to May 1996, of weekly award rates of pay indexes for Tasmania was a rise 1.3% for full-time adult females and 1.1% for full-time adult males, for a combined annual increase of 1.1%. For Australia, the figures were 1.4% for females and 1.1% for males, for a combined annual increase of 1.2%.

For full-time adult female employees in Tasmania, the largest industry increases over this 12 month period occurred in the Manufacturing industry (3.1%); and the Public administration and defence industry (3.0%).

For the same period for full-time adult male employees in Tasmania, the largest industry increases occurred in the Transport and storage industry (2.9%); and the Wholesale and retail trade industry (2.2%).

The largest occupation increase over the same period for full-time adult female employees occurred in Tradespersons (3.3%); Labourers and related workers (1.8%); and Clerks (also 1.8%).

For full-time adult male employees the largest occupation increases over the period occurred in Clerks (1.7%); and Salespersons and personal services workers (also 1.7%).

(See table 14, page 10.)

BUILDING MATERIALS PRICE INDEXES

The price index for house building materials in Hobart increased by 0.6% for the twelve months ending May 1996, which was the highest change for any State capital over that period. Falls were recorded in all other State capitals except Perth and Sydney, where the index rose by 0.2% and 0.4% respectively over the twelve months. The national index fell by 1.0% for the same period.

Over May, Hobart experienced decreases in the prices of cupboards and fittings, plastic pipes and fittings, structural softwood and structural hardwood.

For materials used in other-than-house building, the price index in Hobart rose slightly from April to May 1996 (0.1%), and rose by 1.2% for the year ending May 1996. The highest increase for a State capital recorded for the year was in Perth, at 1.8%. The national index rose by 1.1% for the year.

Components which registered the highest change in Hobart over the year to May were structural steel (up 4.9%), clay bricks and pre-cast concrete products (both up by 4.8%), ready mixed concrete (up by 4.6%), structural timber (down by 9.1%), and non-ferrous pipes and fittings (down by 6.2%).

Sources: *Price Index of Materials Used in House Building*, May 1996, ABS catalogue number 6408.0, released on 5 July 1996, \$13.00.

Price Index of Materials Used in Other Than House Building, May 1996, ABS catalogue number 6407.0, released on 5 July 1996, \$15.00.

CONSUMER PRICE INDEX

The Consumer Price Index: All Groups for Hobart rose by 0.4% in the June quarter 1996, and by 3.0% for the year ending June 1996. The All Groups index for the weighted average of the eight capital cities rose by 0.7% for the June quarter, bringing it to 3.1% for the year ending June.

Quarterly increases recorded in other State capitals were 0.7% in Sydney, 0.8% in Melbourne, 0.7% in Brisbane, 0.3% in Adelaide, 0.7% in Perth, 0.8% in Darwin, and 0.5% in Canberra.

The highest annual increase was recorded in Sydney (3.9%), and the lowest (2.6%) in both Melbourne and Perth.

The underlying rate of inflation, as defined by the Commonwealth Treasury, increased by 0.8% for the June quarter 1996, and 3.1% for the year ending June 1996.

Major contributors to the annual change at the national level were cigarette and tobacco prices (up 14.4%), vehicle insurance (up 10.0%), petrol (up 4.8%), beer (up 5.7%), mortgage interest charges (up 2.3%), and hospital and medical services (up 4.6%). These were partly offset by falls recorded in local government rates and charges (down 4.2%), video and sound equipment (down 7.8%), fresh vegetables (down 8.3%) and fresh potatoes (down 18.9%).

Source: *Consumer Price Index*, June quarter 1996, ABS catalogue number 6401.0, released on 24 July 1996, \$13.50.

GROSS STATE PRODUCT

Tasmanian Gross State Product grew 0.8% in the March quarter 1996, as measured by the trend series at current prices. Tasmanian growth was below the national trend, Australian Gross Domestic Product growing 1.6% during the March quarter. Victoria recorded the largest quarterly growth with 1.8%, while the Northern Territory recorded the lowest, with 0.5%.

Tasmania's annual increase in Gross State Product (March 1995 to March 1996) as measured by the trend series at current prices was 4.0%. Tasmanian annual Gross State Product growth was below the national trend, with Australian Gross Domestic Product growing 6.1% during the same period. Western Australia experienced the largest annual increase of 6.8%, while the Australian Capital Territory experienced the lowest of 2.8%.

Source: *Australian National Accounts, State Accounts*, March quarter 1996, ABS catalogue number 5242.0, released on 12 July 1996, \$19.50.

LIVESTOCK SLAUGHTERING

Trend estimates The May 1996, the Tasmanian trend estimate for the slaughtering of sheep and lambs was 1.3% lower than that recorded in April 1996. The number of pigs slaughtered decreased by 1.1% while the number of cattle and calves slaughtered remained unchanged.

The trend estimate for the slaughtering of sheep and lambs was 63,200 in May 1996, 17.2% below the 76,300 slaughtered in May 1995. The slaughtering of sheep and lambs continued to decline from a high of 71,100 in December 1995.

The trend estimate of 6,700 pigs slaughtered in May 1996 was 13.4% below the 7,700 slaughtered in May 1995. This was the fifth successive month of decline in the number of pigs slaughtered in Tasmania.

The trend estimate of the number of cattle and calves slaughtered was 18,600, 15.4% below the 22,000 slaughtered in May 1995.
(See table 20, page 16.)

BUILDING APPROVALS

There were 175 new dwelling units approved during May 1996 in Tasmania. This was a decrease of 29% on the number recorded for April 1996 (245) and a 30% decrease on the number recorded for May 1995 (251).

For the twelve months ended May 1996 there were 2,553 new dwelling units approved, 22% below the 3,270 units recorded for the twelve months ended May 1995.

The highest number for dwelling units approved in May 1996 was recorded by the City of Clarence and the Municipality of Kingborough, each with 19, followed by the City of Launceston with 18 and the Municipality of West Tamar with 12.

The value of all building approved, at current prices, in May 1996 was \$49.5 million, 29% above the April 1996 figure of \$38.3 million and 32% above the May 1995 figure of \$37.4 million. The value of non-residential building approved in May was \$32.3 million of which \$24.3 million was public sector work and included the Hobart Aquatic Centre, valued at \$10.5 million.
(See table 27, page 20.)

RETAIL

The trend estimate for turnover of retail and selected service establishments for May 1996, in Tasmania, was \$249.7 million, an increase of 5.3% on the May 1995 figure of \$237.1 million. The monthly trend estimate growth rate has eased from 0.8% in December 1995 to 0.5% in May 1996.

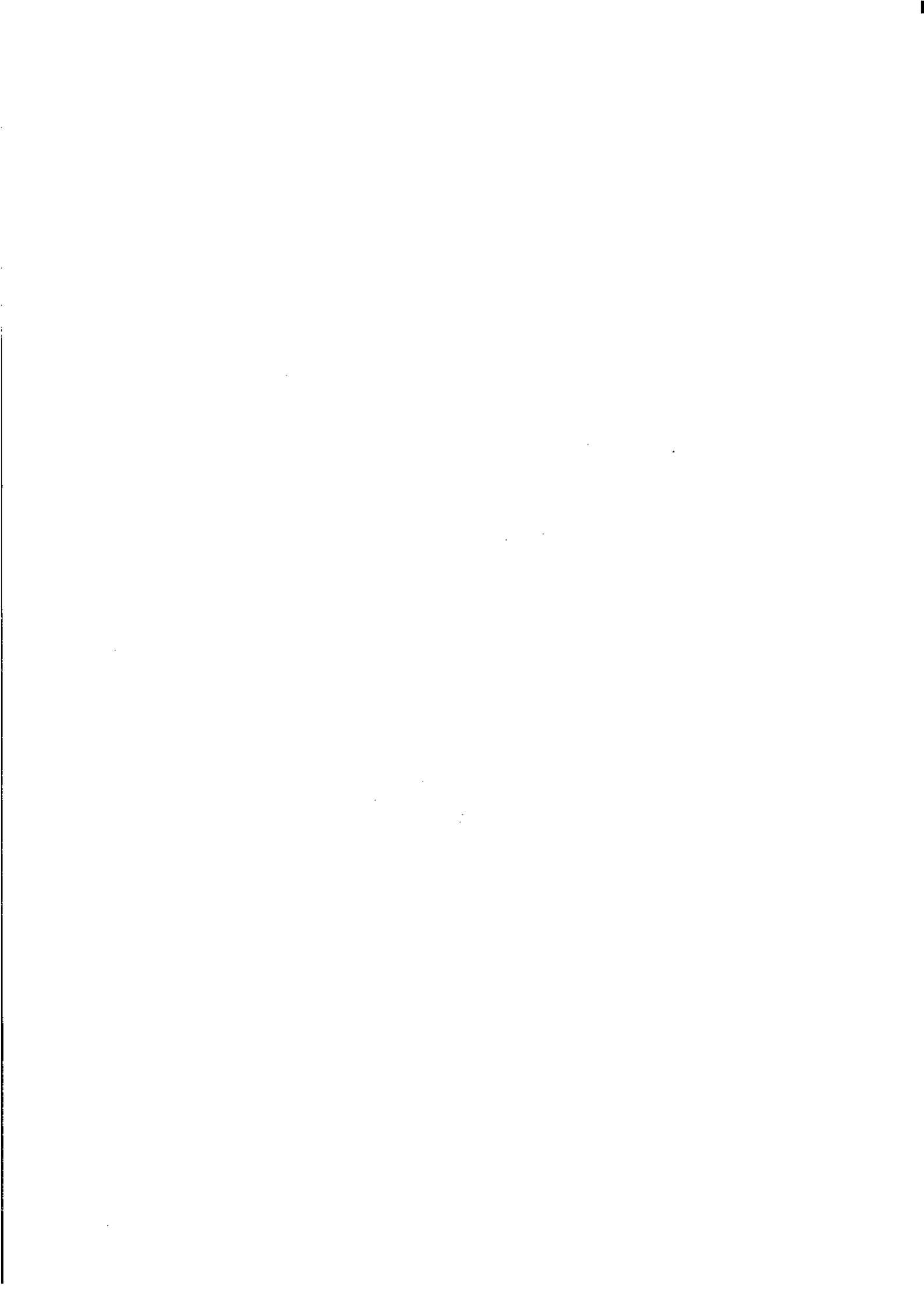
The trend estimate of turnover for May 1996, for Australia (\$10,210.9 million), was 6% higher than for May 1995 (\$9,639.5 million). The trend estimate of retail turnover increased by 0.2% between April 1996 and May 1996. The monthly trend estimate has increased, although at a declining rate, for the past thirteen months from 1.0% in May 1995 to 0.2% for May 1996.

In original terms, the estimate of retail turnover in May 1996, for Tasmania, was \$250.3 million, 9.3% above the figure recorded for May 1995 (\$229.0 million).

(See table 35, page 24.)

NEW MOTOR VEHICLE REGISTRATIONS

There were 1,202 new motor vehicles (excluding motorcycles) registered in Tasmania during May 1996. This was 47% above the 818 registered in April 1996 but 11% below the figure for May 1995 (1,356).
(See table 34, page 24.)



1

POPULATION, TASMANIA

Year or quarter	Estimated resident population at end of period	Natural increase ¹	Net estimated migration gain	Total population growth	Annual growth rate ²
	'000	'000	'000	'000	%
Year ended 30 June					
1992	469.7	3.2	- 0.3	2.9	0.62
1993	471.4	3.1	1.5	1.7	0.35
1994	472.5	3.1	- 2.0	1.1	0.24
1995 p	473.0	2.9	- 2.3	0.6	0.12
Quarter					
1994					
September p	472.8	0.6	- 0.3	0.3	0.19
December p	472.8	0.8	- 0.8	0.0	0.13
1995					
March p	473.2	0.9	- 0.5	0.4	0.21
June p	473.0	0.6	- 0.8	- 0.2	0.12
September p	473.3	0.7	- 0.5	0.2	0.11
December p	473.2	0.5	- 0.6	- 0.1	0.09

¹ Excess of live births registered over deaths registered (based on usual State of residence).

² Percentage growth from same quarter in previous year.

(Source: Australian Demographic Statistics, ABS catalogue number 3101.0)

2

BIRTHS, DEATHS AND MARRIAGES REGISTERED, TASMANIA

Year or quarter	Births		Deaths		Infant mortality ¹		Marriages	
	No.	Rate ²	No.	Rate ²	Deaths	Rate ³	No.	Rate ²
Year ended 31 December								
1991	6 857	14.7	3 664	7.9	61	8.9	3 069	6.6
1992	6 956	14.8	3 722	7.9	43	6.2	3 081	6.6
1993	6 804	14.4	3 618	7.7	37	5.4	3 055	6.5
1994	6 836	14.5	3 909	8.3	46	6.7	2 887	6.1
1995 p	6 567	13.9	3 793	8.0	46	7.0	2 834	6.0
Quarter								
1993								
December	1 647	..	887	..	6	3.6	786	..
1994								
December	1 702	..	883	..	9	5.9	768	..
1995								
March p	1 812	..	903	..	10	5.5	1 061	..
June p	1 613	..	1 017	..	15	9.3	667	..
September p	1 696	..	967	..	12	7.1	307	..
December p	1 446	..	906	..	9	6.2	799	..

¹ Registered deaths of children under one year of age.

² Rate per 1,000 of estimated mean population.

³ Rate per 1,000 live births.

(Source: Australian Demographic Statistics, ABS catalogue number 3101.0)

3

LABOUR FORCE STATUS, TASMANIA : SEASONALLY ADJUSTED AND TREND SERIES

Month	Seasonally adjusted series.				Trend series ²			
	Employed ('000)	Unemployed ('000)	Unemployment rate %	Participation rate %	Employed '000	Unemployed '000	Unemployment rate %	Participation rate %
MALES								
1995								
June	113.5	14.4	11.3	70.9	113.7	14.2	11.1	70.8
July	114.1	12.9	10.1	70.3	113.5	13.7	10.8	70.5
August	112.6	14.4	11.3	70.3	113.1	13.4	10.6	70.1
September	112.9	13.4	10.6	69.9	112.9	13.2	10.5	69.8
October	113.2	11.7	9.3	69.1	113.0	13.2	10.5	69.9
November	112.8	13.6	10.8	70.0	113.5	13.4	10.6	70.2
December	113.8	14.7	11.4	71.0	114.1	13.8	10.8	70.7
1996								
January	114.7	14.0	10.9	71.1	114.8	14.1	11.0	71.3
February	117.0	14.0	10.7	72.4	115.4	14.5	11.2	71.8
March	115.5	15.0	11.5	72.1	115.7	14.8	11.3	72.1
April	116.3	15.3	11.6	72.6	115.8	15.0	11.5	72.2
May	114.5	15.0	11.6	71.5	115.9	15.1	11.5	72.3
June	116.2	15.2	11.6	72.5	115.8	15.2	11.6	72.4
FEMALES								
1995								
June	85.9	7.0	7.5	49.7	86.5	7.4	7.9	50.3
July	86.5	7.2	7.7	50.2	86.6	7.3	7.8	50.3
August	86.2	7.7	8.2	50.3	86.8	7.5	7.9	50.5
September	87.5	7.1	7.5	50.7	87.1	7.7	8.1	50.7
October	87.9	7.9	8.2	51.2	87.3	8.0	8.4	51.0
November	86.7	9.4	9.8	51.4	87.4	8.2	8.6	51.1
December	88.2	8.2	8.5	51.5	87.3	8.4	8.7	51.1
1996								
January	86.5	7.8	8.2	50.4	86.9	8.4	8.8	51.0
February	86.9	8.4	8.9	50.9	86.6	8.4	8.8	50.7
March	85.3	9.1	9.7	50.4	86.2	8.4	8.9	50.5
April	87.0	7.6	8.0	50.5	85.9	8.5	9.0	50.4
May	84.6	8.7	9.3	49.8	85.7	8.5	9.0	50.3
June	86.0	8.9	9.3	50.6	85.5	8.7	9.2	50.2
TOTAL								
1995								
June	199.4	21.4	9.7	60.1	200.2	21.6	9.7	60.4
July	200.6	20.1	9.1	60.1	200.1	21.1	9.5	60.2
August	198.8	22.1	10.0	60.1	200.0	20.9	9.5	60.1
September	200.4	20.5	9.3	60.1	200.0	20.9	9.5	60.1
October	201.0	19.5	8.9	60.0	200.3	21.2	9.6	60.3
November	199.6	23.0	10.3	60.5	200.9	21.6	9.7	60.5
December	201.9	22.9	10.2	61.1	201.4	22.1	9.9	60.8
1996								
January	201.2	21.8	9.8	60.6	201.8	22.5	10.0	61.0
February	203.9	22.5	9.9	61.5	201.9	22.9	10.2	61.1
March	200.8	24.2	10.7	61.1	201.9	23.2	10.3	61.1
April	203.2	22.9	10.1	61.4	201.8	23.4	10.4	61.1
May	199.2	23.7	10.6	60.5	201.6	23.6	10.5	61.1
June	202.2	24.1	10.6	61.4	201.3	23.9	10.6	61.1

¹ For explanation of terms and concepts, refer to The Labour Force, ABS catalogue number 6203.0.

² Trend series revised each month. Users should be aware that the latest observations may be revised substantially.
(Source: Labour Force Australia, ABS catalogue number 6203.0)

4

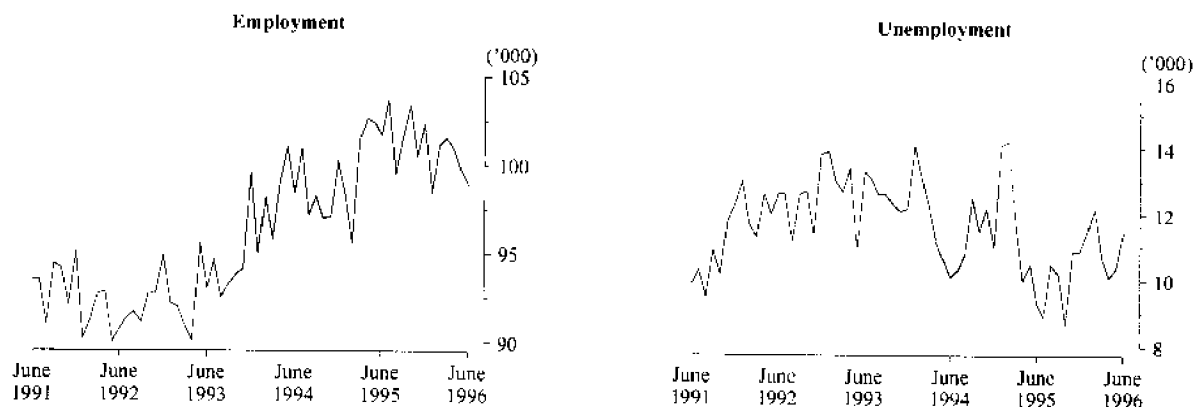
LABOUR FORCE STATUS, BY REGION AND TASMANIA, MALES^{1, 2}

Month		Total employed ('000)	Total unemployed ('000)	Unemployment rate %	Participation rate %
HOBART AND SOUTHERN STATISTICAL DIVISIONS					
1993	June	51.8	7.7	12.9	67.8
1995	June	56.5	6.6	10.4	71.2
1996	April	56.6	6.6	10.5	70.8
	May	56.0	6.7	10.6	70.0
	June	55.6	7.4	11.8	71.0
NORTHERN STATISTICAL DIVISION					
1993	June	31.9	5.1	13.8	73.8
1995	June	31.9	4.2	11.7	71.6
1996	April	32.2	4.6	12.4	73.6
	May	32.3	3.9	10.8	72.3
	June	33.2	4.3	11.3	74.3
MERSEY-LYELL STATISTICAL DIVISION					
1993	June	25.1	5.0	16.7	74.8
1995	June	24.3	3.6	12.9	67.5
1996	April	27.3	3.0	9.8	72.2
	May	26.6	3.5	11.5	72.5
	June	26.6	3.5	11.6	71.8
TASMANIA					
1993	June	108.8	17.8	14.1	71.1
1995	June	112.8	14.4	11.3	70.5
1996	April	116.1	14.2	10.9	71.9
	May	115.0	14.0	10.9	71.2
	June	115.4	15.2	11.6	72.1

1 For explanation of terms and concepts, refer to *Labour Force, Australia*, ABS catalogue number 6203.0.

2 Data in this table are original series, i.e. They are not part of a seasonally adjusted or a trend series. Accordingly, care should be exercised when using this data. New monthly data from each quarter (March, June, September and December) is published two months after the quarter. (Source: Labour Force Estimates—microfiche tables.)

Hobart and Southern Statistical Divisions—Persons



5

LABOUR FORCE STATUS, BY REGION AND TASMANIA, FEMALES

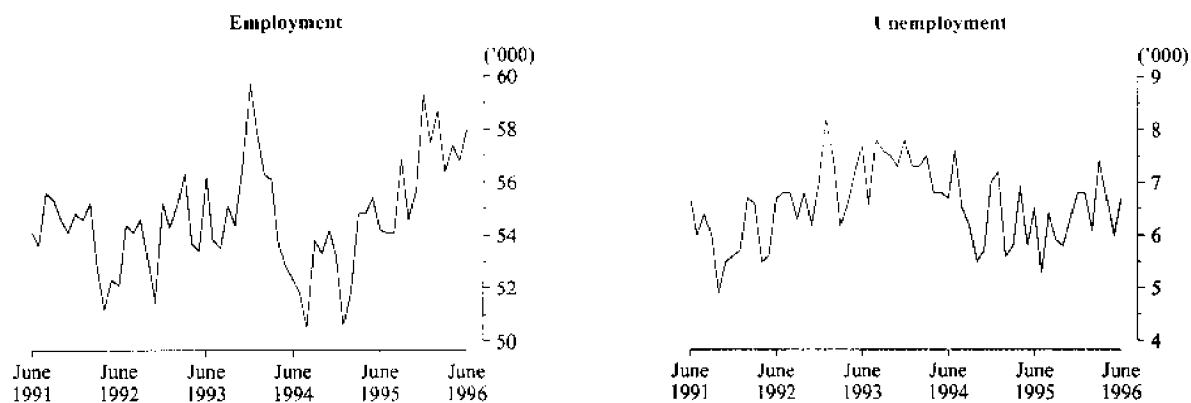
Month		Total employed ('000)	Total unemployed ('000)	Unemployment rate %	Participation rate %
HOBART AND SOUTHERN STATISTICAL DIVISIONS					
1993	June	41.2	5.6	11.9	51.7
1995	June	45.1	2.7	5.6	51.6
1996	April	44.3	3.5	7.3	50.9
	May	43.7	3.7	7.9	51.0
	June	43.3	4.1	8.6	51.3
NORTHERN STATISTICAL DIVISION					
1993	June	24.2	2.5	9.5	49.6
1995	June	22.3	2.2	9.2	46.7
1996	April	25.2	2.1	7.8	53.0
	May	24.5	2.2	8.1	51.8
	June	24.8	2.4	8.9	52.2
MERSEY-LYELL STATISTICAL DIVISION					
1993	June	16.8	2.5	12.9	49.4
1995	June	18.2	1.8	9.1	48.3
1996	April	17.2	2.1	10.7	46.00
	May	17.8	2.3	11.5	46.91
	June	17.7	2.1	10.4	46.26
TASMANIA					
1993	June	82.3	10.6	11.4	50.6
1995	June	85.6	6.7	7.3	49.5
1996	April	86.7	7.7	8.1	50.4
	May	86.0	8.2	8.7	50.3
	June	85.8	8.5	9.1	50.4

1 For explanation of terms and concepts, refer to *Labour Force, Australia*, ABS catalogue number 6203.0.

2 Data in this table are original series, i.e. They are not part of a seasonally adjusted or a trend series. Accordingly, care should be exercised when using this data. New monthly data from each quarter (March, June, September and December) is published two months after the quarter.

(Source: Labour Force Estimates—microfiche tables.)

Northern Statistical Division—Persons



6

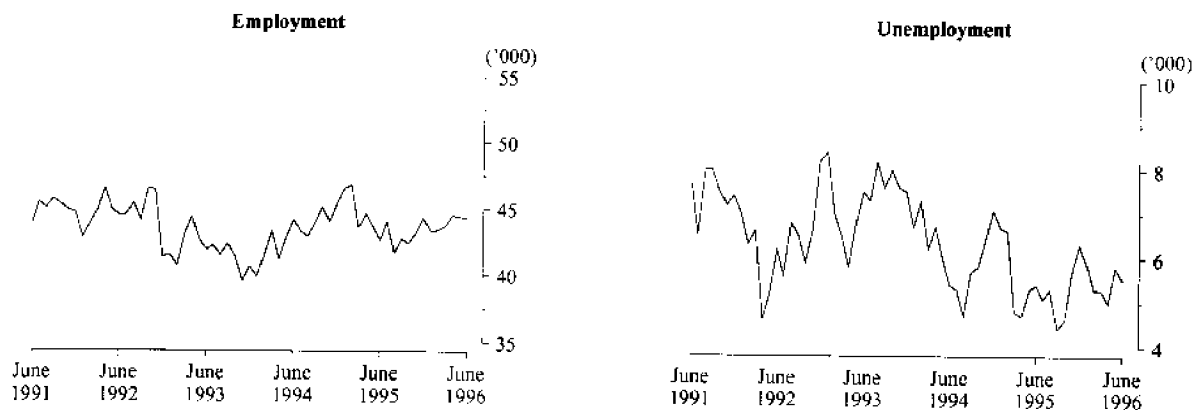
LABOUR FORCE STATUS, BY REGION AND TASMANIA, PERSONS^{1, 2}

Month		Total employed ('000)	Total unemployed ('000)	Unemployment rate %	Participation rate %
HOBART AND SOUTHERN STATISTICAL DIVISIONS					
1993	June	93.0	13.3	12.5	59.6
1995	June	101.7	9.3	8.3	61.2
1996	April	100.9	10.1	9.1	60.6
	May	99.7	10.4	9.4	60.3
	June	98.9	11.5	10.4	60.9
NORTHERN STATISTICAL DIVISION					
1993	June	56.2	7.7	12.0	61.2
1995	June	54.2	6.5	10.7	60.2
1996	April	57.4	6.7	10.5	63.2
	May	56.8	6.0	9.6	61.9
	June	58.0	6.7	10.3	63.0
MERSEY-LYELL STATISTICAL DIVISION					
1993	June	41.9	7.5	15.2	62.3
1995	June	42.6	5.4	11.3	57.8
1996	April	44.5	5.0	10.1	59.1
	May	44.4	5.8	11.5	59.5
	June	44.3	5.5	11.1	58.9
TASMANIA					
1993	June	191.1	28.5	13.0	60.7
1995	June	198.4	21.1	9.6	59.8
1996	April	202.7	21.9	9.7	61.0
	May	200.9	22.2	10.0	60.6
	June	201.2	23.7	10.5	61.1

1 For explanation of terms and concepts, refer to *Labour Force, Australia*, ABS catalogue number 6203.0.

2 Data in this table are original series, i.e. They are not part of a seasonally adjusted or a trend series. Accordingly, care should be exercised when using this data. New monthly data from each quarter (March, June, September and December) is published two months after the quarter.
(Source: Labour Force Estimates—microfiche tables.)

Mersey-Lyell Statistical Division—Persons



Month	Employed		Unemployed		Labour force	Not in labour force	Civilian population aged 15-19	Unemployment rate	Unemployment ratio	Participation rate	
	Full-time	Total	Looking for full-time work	Total							
	'000	'000	'000	'000	'000	'000	'000	%	%	%	
ATTENDING NEITHER SCHOOL NOR A TERTIARY INSTITUTION FULL TIME											
1993	May	7.6	10.1	2.8	3.0	13.1	1.8	15.0	23.0	20.0	87.9
1995	May	6.1	8.9	3.3	3.4	12.3	1.0	13.3	27.7	25.6	92.5
1996	March	7.0	9.8	3.0	3.3	13.1	1.2	14.3	24.8	23.1	91.6
	April	8.0	10.8	2.2	2.4	13.2	1.1	14.3	18.3	16.8	92.5
	May	7.0	9.3	2.5	2.7	12.0	1.0	13.0	22.4	20.8	92.2
ATTENDING SCHOOL OR A TERTIARY INSTITUTION FULL TIME											
1993	May	0.1	4.3	0.7	1.7	6.0	13.7	19.7	28.3	8.6	30.5
1995	May	0.2	5.8	0.3	1.5	7.2	13.4	20.7	20.8	7.3	34.8
1996	March	0.1	7.2	0.3	1.5	8.6	11.1	19.8	17.4	7.6	43.4
	April	0.1	6.2	0.2	1.4	7.7	12.1	19.8	18.2	7.1	38.9
	May	0.2	6.6	0.4	1.1	7.7	13.3	21.0	14.3	5.2	36.7
TOTAL											
1993	May	7.7	14.5	3.5	4.7	19.2	15.5	34.7	24.6	13.5	55.3
1995	May	6.2	14.7	3.6	4.9	19.6	14.4	34.0	24.9	14.4	57.5
1996	March	7.1	17.0	3.3	4.7	21.7	12.3	34.1	21.7	13.8	63.8
	April	8.1	17.0	2.4	3.9	20.9	13.2	34.1	18.5	11.4	61.3
	May	7.1	15.9	2.9	3.8	19.7	14.3	34.1	19.4	11.1	57.9

1 Persons aged 15-19 years.

2 For explanation of terms and concepts, refer to *Labour Force, Australia*, ABS catalogue number 6203.0.
(Source: Labour Force Estimates—unpublished data.)

Occupation	February 1995	February 1996		Proportion of total employed		
	Persons	Males	Females	Persons	February 1995	February 1996
	'000	'000	'000	'000	%	%
Managers and administrators	19.5	13.5	4.3	17.8	10.0	8.8
Farmers and farm managers	7.1	4.5	1.3	5.9	3.7	2.9
Managing supervisors	7.2	4.1	1.8	5.9	3.7	2.9
Other	5.2	4.9	1.2	6.0	2.7	3.0
Professionals	21.9	14.9	10.0	24.9	11.3	12.3
Building and professional engineers	2.2	2.0	—	2.0	1.1	1.0
Health diagnosis and treatment practitioners	3.5	1.4	1.4	2.8	1.8	1.4
School teachers	6.4	2.0	3.0	5.0	3.3	2.5
Business professionals	2.9	3.8	1.9	5.7	1.5	2.8
Other	6.9	5.7	3.7	9.4	3.6	4.6
Para-professionals	13.9	7.1	6.0	13.1	7.2	6.5
Engineering and building associates and technicians	1.7	1.8	—	1.8	0.9	0.9
Registered nurses	4.8	0.4	4.9	5.3	2.5	2.6
Other	7.4	4.9	1.1	6.0	3.8	3.0
Tradespersons	28.3	26.9	2.8	29.7	14.6	14.6
Metal fitting and machining tradespersons	2.2	2.6	—	2.6	1.1	1.3
Electrical and electronics tradespersons	4.5	5.0	—	5.0	2.3	2.5
Building tradespersons	6.9	6.9	0.1	7.0	3.6	3.4
Other	14.7	12.4	2.7	15.1	7.6	7.4
Clerks	30.4	8.8	24.2	33.0	15.6	16.3
Stenographers and typists	4.0	0.3	3.0	3.3	2.1	1.6
Receptionists, telephonists and messengers	4.8	1.1	4.8	5.9	2.5	2.9
Other	21.6	7.4	16.4	23.8	11.1	11.7
Salespersons and personal service workers	33.1	10.9	23.9	34.7	17.0	17.1
Sales representatives	2.3	1.8	1.1	2.8	1.2	1.4
Sales assistants	15.0	5.5	12.4	17.9	7.7	8.8
Other	15.8	3.6	10.4	14.0	8.1	6.9
Plant and machine operators, and drivers	16.0	14.6	1.9	16.5	8.2	8.1
Road and rail transport drivers	7.0	5.2	0.3	5.5	3.6	2.7
Machine operators	4.5	3.5	1.6	5.1	2.3	2.5
Other	4.5	5.9	—	5.9	2.3	2.9
Labourers and related workers	31.2	21.2	12.1	33.3	16.1	16.4
Trades assistants and factory hands	4.8	3.2	1.3	4.5	2.5	2.2
Agricultural labourers and related workers	7.0	5.7	2.3	8.0	3.6	3.9
Cleaners	6.3	1.8	5.4	7.2	3.2	3.5
Construction and mining labourers	3.0	2.9	0.1	3.0	1.5	1.5
Other	10.0	7.6	3.0	10.6	5.1	5.2
Total employed	194.3	117.9	85.2	203.0	100.0	100.0

¹ For explanation of terms and concepts, refer to *Labour Force, Australia*, ABS catalogue number 6203.0. (Source: Labour Force Estimates—unpublished data.)

9

EMPLOYED WAGE AND SALARY EARNERS, SECTOR AND INDUSTRY, TASMANIA¹

Industry	Number of employees ('000) February 1995					Percentage distribution	
	Private and public					February 1993	February 1995
	Private	Public	Males	Females	Persons		
Agriculture, forestry, fishing and hunting	n.a.	0.7	n.a.	n.a.	n.a.	n.a.	n.a.
Mining	1.5	—	1.4	0.1	1.5	1.7	1.1
Manufacturing	20.3	0.1	15.4	4.9	20.4	14.8	15.2
Electricity, gas and water, construction	6.0	2.7	7.6	1.0	8.7	6.8	6.5
Wholesale and retail trade	26.0	—	15.0	11.0	26.1	20.8	19.4
Transport and storage	3.6	1.5	4.1	1.1	5.2	4.1	3.9
Communication	—	2.3	1.8	0.6	2.3	1.6	1.7
Finance, property and business services	10.1	0.9	4.9	6.0	10.9	9.3	8.1
Public administration and defence	—	10.5	6.5	4.0	10.5	7.0	7.8
Community services	14.0	23.4	11.9	25.5	37.4	24.9	27.8
Recreation, personal and other services	10.2	0.6	4.1	6.7	10.8	8.4	8.0
Total all industries	91.8	42.6	73.2	61.2	134.4	100.0	100.0

¹ For explanation of terms and concepts, refer to *Employed Wage and Salary Earners, Australia*, catalogue number 6248.0.
(Source: *Employed Wage and Salary Earners, ABS catalogue number 6248.0.*)

10

AVERAGE HOURS WORKED, TASMANIA

Month	Average weekly total hours worked, all employed persons ¹			Average weekly overtime hours ²		Percentage of employees working overtime ²
	Males	Females	Persons	Per employee	Per employee working overtime	
	1993					
May	39.0	28.1	34.4	1.1	7.3	15.2
1995						
May	39.6	27.8	34.5	0.9	5.9	14.5
August	40.9	29.6	36.0	0.8	5.7	14.4
November	39.7	26.5	33.9	0.9	6.4	14.7
1996						
February	37.7	25.6	32.7	0.9	6.5	14.1
May	40.1	27.0	34.5	0.9	5.6	16.0

¹ For explanation of terms and concepts, refer to *Labour Force, Australia*, ABS catalogue number 6203.0.

² For explanation of terms and concepts, refer to *Job Vacancies and Overtime, Australia*, ABS catalogue number 6354.0.

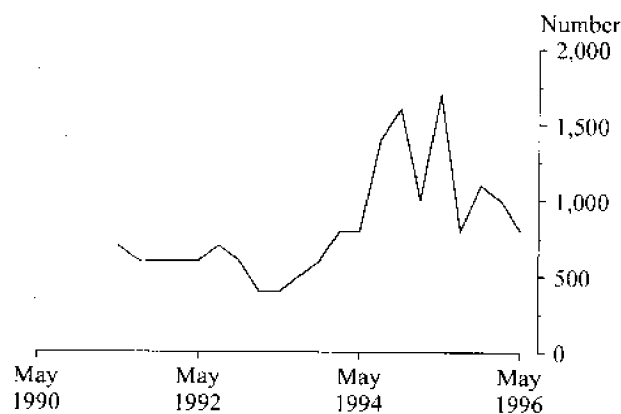
11 JOB VACANCIES, TASMANIA¹

Period	Number	Rate ² %
1993		
May	400	0.3
1995		
May	1 700	1.1
August	800	0.6
November	1 100	0.7
1996		
February	1 000	0.6
May	800	0.5

¹ For explanation of terms and concepts refer to *Job Vacancies and Overtime, Australia*, catalogue number 6354.0.

² Job vacancies are expressed as a percentage of the number of job vacancies divided by the number of employees plus job vacancies.

JOB VACANCIES, TASMANIA



12 INDUSTRIAL DISPUTES, TASMANIA¹

Month	Working days lost	Twelve months ending	Working days lost per thousand employees
1995			
April	100	1995	30
May	200	April	31
June	700	May	35
July	800	June	38
August	100	July	33
September	100	August	30
October	0	September	30
November	100	October	30
December	200	November	30
		December	22
1996			
January	800	January	24
February	100	February	23
March	0	March	20
April	100	April	20

Twelve months ended 1996

April 3 300

¹ For explanation of terms and concepts, refer to *Industrial Disputes, Australia*, ABS catalogue number 6321.0.

13

AVERAGE WEEKLY EARNINGS OF EMPLOYEES, TASMANIA^{1, 2} (\$)

Quarter	Survey reference period	Males			Females			Persons		
		Full-time adults		All males	Full-time adults		All females	Full-time adults		All employees
		Weekly ordinary time earnings	Weekly total earnings	Weekly total earnings	Weekly ordinary time earnings	Weekly total earnings	Weekly total earnings	Weekly ordinary time earnings	Weekly total earnings	Weekly total earnings
ORIGINAL										
1995										
March	17 February	627.80	668.50	601.70	542.50	554.00	393.50	600.10	631.30	502.70
June	19 May	635.70	678.60	608.80	546.50	556.90	385.60	606.40	638.60	500.70
September	18 August	634.60	675.50	598.70	544.50	555.10	384.80	604.20	634.80	495.60
December	17 November	647.90	687.90	615.50	556.10	569.00	403.20	617.30	648.20	513.80
1996										
March	16 February	652.70	691.40	617.80	561.10	569.30	391.80	622.90	651.70	510.00
TREND										
1995										
March	17 February	631.70	673.00	599.40	542.00	554.20	388.70	601.70	633.30	498.00
June	19 May	633.80	675.10	603.90	546.40	557.40	389.10	604.80	636.40	500.50
September	18 August	638.60	680.50	609.70	549.10	560.30	393.00	609.00	640.70	505.10
December	17 November	644.90	687.80	616.30	552.50	565.10	399.80	614.40	646.70	511.30
1996										
March	16 February	651.10	687.00	611.70	558.20	566.80	390.80	619.80	647.80	507.30

¹ For explanation of terms and concepts, refer to *Average Weekly Earnings, States and Australia* (Catalogue No. 6302.0).

² Prior to September 1995 only the original series appeared in this table.

(Source: *Average Weekly Earnings, States and Australia*, ABS catalogue number 6302.0.)

14

WEEKLY AWARD RATES OF PAY INDEXES, FULL-TIME ADULT EMPLOYEES, TASMANIA¹

(Base: June 1985 = 100.0)

Industry	1993	1995	1996		
	May	May	March	April	May
Mining	137.7	137.7	137.7	137.7	137.7
Manufacturing	145.0	148.5	150.0	150.1	150.2
Electricity, gas and water	130.9	136.3	136.4	136.4	136.6
Construction	141.3	143.7	144.4	144.4	144.4
Wholesale trade	137.6	140.1	143.3	143.3	143.3
Retail trade	136.5	139.7	142.7	142.7	142.7
Transport and storage	137.9	139.6	143.1	143.1	143.3
Communication	135.4	135.4	135.4	135.4	135.4
Finance, property and business services	137.4	137.7	139.6	139.6	139.6
Public administration and defence	135.2	152.2	155.1	155.1	155.1
Community services	140.3	144.3	145.2	145.2	145.2
Recreation, personal and other services	146.0	151.1	153.0	153.8	153.8
Total all industries	139.2	143.7	145.2	145.3	145.3

¹ For explanation of terms and concepts, refer to *Award Rates of Pay Indexes, Australia*, ABS catalogue number 6312.0.

(Source: *Award Rates of Pay Indexes, Australia*, ABS catalogue number 6312.0.)

15

SUMMARY OF ANNUAL MOVEMENTS IN WAGES AND PRICES, TASMANIA

Period	CPI. All groups Hobart	Price index of materials used in house building. All groups, Hobart	Price index of materials used in building other than house building. All groups, Hobart	Average weekly total earnings, full-time adult employees (original series)	Weekly award rates of pay index, full-time adult employees
PERCENTAGE CHANGE FROM PREVIOUS YEAR					
1993					
May	..	0.9	1.0	3.1	0.5
1995					
May	..	5.1	3.5	3.1	1.1
1995					
September	4.5	4.3	3.5	..	1.7
October	..	3.6	3.7	..	1.6
November	..	3.8	3.2	1.8	1.6
December	4.4	3.4	3.0	..	1.8
1996					
January	..	3.2	2.9	..	1.4
February	..	2.2	2.4	2.3	1.4
March	3.4	1.6	2.0	..	1.2
April	..	1.7	1.4	..	1.2
May	..	0.6	1.2	n.y.a.	1.1

(Sources:

Consumer Price Index, ABS catalogue number 6401.0,

Price Index of Materials Used in House Building, ABS catalogue number 6408.0,

Price Index of Materials Used in Other than House Building, ABS catalogue number 6407.0,

Average Weekly Earnings, States and Australia, ABS catalogue number 6302.0,

Award Rates of Pay Indexes, Australia, ABS catalogue number 6312.0.)

16

HOUSE PRICE INDEX NUMBERS¹, HOBART (Base of each Index: 1989-90 = 100.0)

	Established house price index		Project home price index	
	Index	% change ²	Index	% change ²
1992-93	116.6	4.1	114.1	3.6
1993-94	122.5	5.1	117.7	3.2
1994-95	129.0	5.3	121.3	3.1
1994				
March	123.0	1.3	117.8	0.8
June	126.0	2.4	119.4	1.4
September	128.2	1.7	120.1	0.6
December	128.2	0.0	120.5	0.3
1995				
March	129.4	0.9	121.6	0.9
June	130.1	0.5	123.1	1.2
September	129.2	- 0.7	123.5	0.3
December	129.1	- 0.1	123.5	0.0
1996				
March	129.8	+ 0.5	123.3	- 0.2

¹ Used in calculating the mortgage interest charges component of the Consumer Price Index.

² Percentage change over previous period.

(Source: House Price Indexes: Eight Capital Cities, ABS catalogue number 6416.0)

17

 CONSUMER PRICE INDEX: HOBART AND EIGHT CAPITAL CITIES COMBINED^{1, 2}
 (Base of each index; year 1989-90 = 100.0)

Period	Hobart					
	Food	Clothing	Housing ³	Household equipment and operation	Transportation	Tobacco and alcohol
1993						
December	111.7	106.8	93.4	111.8	112.3	133.4
1994						
March	112.6	106.4	93.3	112.2	111.9	134.3
June	112.2	106.4	94.2	112.4	112.8	134.8
September	113.9	106.6	94.8	112.8	113.9	137.2
December	113.3	105.3	97.6	113.9	115.0	139.1
1995						
March	115.4	105.0	102.7	114.9	115.1	140.3
June	116.1	106.1	104.5	115.4	117.2	143.1
September	117.3	105.9	106.0	116.5	119.4	144.3
December	117.1	105.6	106.5	117.5	120.1	145.9
1996						
March	118.1	106.3	107.2	117.8	119.0	150.3
June	118.4	106.0	107.6	118.5	119.8	153.3

17

 CONSUMER PRICE INDEX: HOBART AND EIGHT CAPITAL CITIES COMBINED^{1, 2} (continued)
 (Base of each index; year 1989-90 = 100.0)

Period	Hobart		All groups		Weighted average of eight capital cities ³	
	Health and personal care	Recreation and education	Index	% change over previous period	Index	% change over previous period
1993						
December	134.5	111.0	111.6	+ 0.5	110.0	+ 0.2
1994						
March	137.5	109.7	111.9	+ 0.3	110.4	+ 0.4
June	137.9	111.3	112.4	+ 0.4	111.2	+ 0.7
September	138.7	111.7	113.3	+ 0.8	111.9	+ 0.6
December	138.7	113.0	114.2	+ 0.8	112.8	+ 0.8
1995						
March	140.4	115.4	116.1	+ 1.7	114.7	+ 1.7
June	141.0	114.0	117.1	+ 0.9	116.2	+ 1.3
September	146.7	113.3	118.4	+ 1.1	117.6	+ 1.2
December	146.9	115.8	119.2	+ 0.7	118.5	+ 0.8
1996						
March	149.7	117.1	120.1	+ 0.8	119.0	+ 0.4
June	150.5	116.0	120.6	+ 0.4	119.8	+ 0.7

¹ Further information on construction of CPI indexes is contained in the bulletin *The Australian Consumer Price Index Concepts, Sources and Methods* (Catalogue No. 6461.0).

² The CPI is now published on a reference base of 1989-90 = 100.0.

³ Series from and including March 1989 has been affected by the change in treatment of mortgage interest charges.
(Source: *Consumer Price Index*, ABS catalogue number 6401.0.)

18

PRICE INDEX OF MATERIALS USED IN BUILDING OTHER THAN HOUSE BUILDING: HOBART
(Base year: 1989-90 = 100.0)*Index numbers for selected major building materials*

<i>Period</i>	<i>Structural timber</i>	<i>Clay bricks</i>	<i>Ready mixed concrete</i>	<i>Precast concrete products</i>	<i>Steel decking, cladding etc.</i>	<i>Structural steel</i>
1995						
March	125.6	118.0	116.9	122.5	107.5	116.0
April	125.8	118.0	117.0	122.5	107.1	116.0
May	125.8	118.0	118.3	122.5	107.5	117.0
June	125.8	118.1	118.0	122.5	107.5	119.6
July	124.9	118.1	117.1	130.3	110.7	119.6
August	122.0	118.1	117.0	130.3	110.7	119.6
September	122.1	123.2	116.7	130.3	111.0	119.6
October	119.7	123.2	117.2	130.3	111.0	120.9
November	120.1	123.2	116.3	130.3	111.0	120.9
December	120.1	123.3	114.5	130.4	111.0	121.9
1996						
January	120.1	123.3	116.9	130.4	111.0	121.9
February	116.9	123.3	115.9	128.4	112.1	121.9
March p	116.9	123.7	113.2	128.4	112.3	121.9
April p	116.9	123.7	113.2	128.4	112.3	122.7
May p	114.4	123.7	112.9	128.4	112.3	122.7

18

PRICE INDEX OF MATERIALS USED IN BUILDING OTHER THAN HOUSE BUILDING: HOBART—*continued*
(Base year: 1989-90 = 100.0)*Index numbers for selected major building materials*

<i>Period</i>	<i>Reinforcing steel bar, fabric and mesh</i>	<i>Aluminium windows</i>	<i>Fabricated steel products</i>	<i>Builders' hardware</i>	<i>Sand & aggregate</i>	<i>Paint & other coatings</i>	<i>Non-ferrous pipes & fittings</i>
1995							
March	105.9	103.3	107.6	114.2	133.1	114.7	183.3
April	105.9	104.5	107.6	114.6	133.1	114.7	183.2
May	105.9	104.5	107.6	114.6	133.1	115.5	186.0
June	105.7	104.5	107.6	118.1	133.1	114.9	183.3
July	107.0	104.5	107.6	118.9	133.1	116.3	184.9
August	107.4	104.5	107.7	118.9	133.1	119.5	184.4
September	109.2	104.5	107.6	120.4	133.1	118.9	169.0
October	109.2	104.5	108.3	120.7	133.1	118.9	169.1
November	109.2	104.5	108.3	119.2	133.1	118.7	169.1
December	109.2	104.5	108.3	117.7	133.1	121.4	169.1
1996							
January	109.2	104.5	108.3	118.3	133.1	121.5	169.1
February	109.2	104.5	108.1	117.7	133.1	121.5	169.4
March p	109.2	104.7	108.3	117.7	133.1	121.5	172.8
April p	109.2	104.4	111.5	117.3	133.1	118.1	174.5
May p	109.2	104.4	111.5	116.0	133.1	120.6	

(Source: Price Index of Materials Used in Other than House Building, ABS catalogue number 6407.0.)

18

PRICE INDEX OF MATERIALS USED IN BUILDING OTHER THAN HOUSE BUILDING: HOBART—continued
(Base year: 1989-90 = 100.0)

Period	All electrical materials		All mechanical services		All plumbing materials	
	Index	% change over previous period	Index	% change over previous period	Index	% change over previous period
1995						
March	113.1	+ 0.3	113.6	+ 0.2	128.3	- 0.1
April	114.7	+ 1.4	114.4	+ 0.7	128.4	+ 0.1
May	115.2	+ 0.4	113.9	- 0.4	128.9	+ 0.4
June	116.7	+ 1.3	114.0	+ 0.1	129.4	+ 0.4
July	117.9	+ 1.0	114.1	+ 0.1	129.7	+ 0.2
August	118.9	+ 0.8	114.0	- 0.1	129.9	+ 0.2
September	118.9	0.0	113.3	- 0.6	126.6	- 2.5
October	118.7	- 0.2	115.2	+ 1.7	127.4	+ 0.6
November	118.7	0.0	114.7	- 0.4	127.4	0.0
December	118.5	- 0.2	114.8	+ 0.1	127.5	+ 0.1
1996						
January	117.8	- 0.6	114.8	0.0	127.5	0.0
February	117.8	0.0	115.4	+ 0.5	127.6	+ 0.1
March p	118.6	+ 0.7	115.7	+ 0.3	127.6	0.0
April p	118.3	- 0.3	116.1	+ 0.3	126.6	- 0.8
May p	119.6	+ 1.1	116.1	0.0	127.1	+ 0.4

18

PRICE INDEX OF MATERIALS USED IN BUILDING OTHER THAN HOUSE BUILDING: HOBART—continued
(Base year: 1989-90 = 100.0)

Period	All groups excluding electrical materials and mechanical services		All groups	
	Index	% change over previous period	Index	% change over previous period
1995				
March	113.0	+ 0.3	112.8	+ 0.3
April	113.6	+ 0.5	113.5	+ 0.6
May	114.1	+ 0.4	113.8	+ 0.3
June	114.6	+ 0.4	114.2	+ 0.4
July	115.1	+ 0.4	114.7	+ 0.4
August	115.3	+ 0.2	114.9	+ 0.2
September	115.5	+ 0.2	114.9	0.0
October	115.8	+ 0.3	115.5	+ 0.5
November	115.7	- 0.1	115.3	- 0.2
December	115.5	- 0.2	115.1	- 0.2
1996				
January	115.9	+ 0.3	115.3	+ 0.2
February	115.6	- 0.3	115.2	- 0.1
March p	115.3	- 0.3	115.1	- 0.1
April p	115.2	- 0.1	115.1	0.0
May p	115.3	- 0.1	115.2	+ 0.1

(Source: Price Index of Materials Used in Other than House Building, ABS catalogue number 6407.0.)

19

MISCELLANEOUS INDICATORS OF PRODUCTION, TASMANIA

Year or month	Dairy products ¹			Staff-hours worked ²	
	Whole milk ⁴	Factory butter ⁵	Factory cheese	Textile manufacturing ⁶	Vegetable preserving
	million litres	tonnes	tonnes	'000	'000
1992-93	412.9	6 287	20 043	1 740	1 915
1993-94	447.3	7 846	22 461	1 575	2 002
1994-95	436.5	8 105	20 529	1 527	1 838
1993					
April	32.1	605	1 483	163	163
1995					
April	24.6	r 611	r 1 246	108	142
1996					
February	48.7	1 175	1 912	116	163
March	45.7	936	1 783	122	178
April	36.9	873	1 472	106	182

19

MISCELLANEOUS INDICATORS OF PRODUCTION, TASMANIA (continued)

Year or month	Newsprint ⁷	Refined zinc	Metal. refin. index ³	Electricity	Gas
	'000 tonnes	'000 tonnes		million kW.h	'000 MJ
1992-93	228.4	212.0	109.4	8 864	61 432
1993-94	208.9	193.8	105.5	8 855	55 767
1994-95	222.7	189.8	98.3	8 688	51 933
1993					
April	18.6	14.7	99.7	698	4 983
1995					
April	21.6	16.4	100.1	717	3 518
1996					
February	19.9	17.4	99.3	668	2 265
March	20.8	17.6	102.6	724	2 425
April	19.5	17.9	106.3	751	3 087

¹ Source: Australian Dairy Corporation.

² Changing productivity per staff-hour makes these indicators unsatisfactory for long-term comparisons.

³ Metallurgical refining index (Base: 1979-80 = 100.0) Output from selected establishments covering the smelting and refining of ferro-alloys, zinc and aluminium. The weighting pattern is based on the establishments' value added as derived from the 1979-80 Manufacturing Census. For multi-product establishments, value added was apportioned to products on the basis of gross receipts from each product.

⁴ Includes the whole milk equivalent of farm cream intake.

⁵ Includes butter equivalent of butter oil.

⁶ Includes spinning, weaving and carpet making. Reported by establishments which manufacture textiles only, or manufacture clothing and textiles in the one plant.

⁷ Excludes production of directory newsprint and high grade specialty paper.

(Source: ABS unpublished data.)

20

LIVESTOCK SLAUGHTERING, TASMANIA: NUMBERS ('000)

Year or month	Cattle					
	Bulls, bullocks and steers	Cows and heifers	Calves	Sheep	Lambs	Pigs
1992-93	99.0	90.4	32.7	473.4	456.5	92.5
1993-94	101.8	85.2	23.2	526.1	437.8	95.8
1994-95	111.0	96.9	29.2	569.3	477.2	92.9
1994						
May	9.5	9.1	0.2	49.6	38.7	7.8
1995						
May	10.9	10.3	1.2	43.6	41.1	8.2
June	10.5	10.3	0.9	42.8	44.8	8.6
July	p 8.1	5.8	1.1	18.6	25.6	6.5
August	p 5.0	4.8	14.0	18.2	27.3	7.3
September	p 5.6	4.4	16.6	18.0	29.0	7.1
October	p 7.0	6.3	5.3	25.5	28.6	6.1
November	p 8.8	7.1	0.8	36.5	34.9	6.9
December	p 9.5	7.6	0.5	44.8	40.5	8.4
1996						
January	p 11.2	6.8	0.1	43.6	38.9	6.1
February	p 8.6	7.8	0.1	39.8	40.4	6.3
March	p 9.0	8.9	0.2	40.6	41.2	7.2
April	p 6.6	6.4	0.9	31.4	30.7	6.0
May	p 10.8	10.7	1.4	42.5	39.7	7.3

(Source: *Livestock Products, Australia*, ABS catalogue number 7215.0.)

21

LIVESTOCK SLAUGHTERING, TASMANIA: SEASONALLY ADJUSTED AND TREND SERIES¹

Month	Seasonally adjusted			Trend series ²		
	Cattle and calves	Sheep and lambs	Pigs	Cattle and calves	Sheep and lambs	Pigs
1994						
May	16 000	83 912	7 875	15 851	86 905	7 882
1995						
May	21 931	79 573	8 072	22 023	76 323	7 718
June	24 231	79 542	7 402	21 066	73 182	7 555
July	17 108	61 018	6 891	20 129	70 083	7 345
August	18 875	68 669	7 418	19 602	68 228	7 149
September	19 047	68 094	7 287	19 652	68 207	7 006
October	19 681	71 035	6 803	20 164	69 607	6 922
November	20 691	69 299	6 524	20 504	70 904	6 896
December	24 723	77 577	6 761	20 443	71 115	6 900
1996						
January	18 563	72 699	7 354	19 916	69 735	6 893
February	18 684	65 606	6 862	19 236	67 577	6 876
March	17 537	63 666	7 006	18 774	65 570	6 828
April	15 710	54 941	6 437	18 614	64 047	6 758
May	23 016	72 187	6 607	18 641	63 188	6 682

¹ This data has been revised to take account of the latest seasonal factor.

² Trend estimates may be revised as data for later months become available.

(Source: unpublished data.)

22

MEAT PRODUCTION, TASMANIA (tonnes)

Year or month	Meat (carcass weight)					Total
	Beef	Veal	Mutton	Lamb	Pigmeat ¹	
1992-93	44 925	692	8 949	7 456	5 749	67 770
1993-94	47 458	515	9 992	7 047	6 019	71 031
1994-95	49 827	1 059	11 230	8 412	5 982	76 511
1994						
May	4 970	8	929	634	470	7 011
1995						
May	4 881	39	895	761	532	7 108
June	4 864	38	877	829	553	7 161
July p	3 569	30	389	481	426	4 895
August p	2 312	353	378	514	475	4 031
September p	2 354	418	372	546	470	4 161
October p	3 151	141	529	540	399	4 761
November p	3 846	24	797	659	449	5 775
December p	4 145	17	983	764	546	6 456
1996						
January p	4 467	4	937	733	397	6 538
February p	4 122	5	852	761	410	6 150
March p	4 175	9	860	777	470	6 290
April p	3 012	26	657	579	397	4 671
May p	5 230	42	892	749	476	7 389

¹ Includes pork used for production of bacon and ham.

(Source: *Livestock Products, Australia*, ABS catalogue number 7215.0.)

23

PRINCIPAL MINERAL CONCENTRATES PRODUCED, TASMANIA ('000 tonnes)

Year or quarter	Concentrate							
	Copper	Iron (pellets)	Iron pyrite	Lead	Lead-copper	Lead-zinc	Tin	Zinc
1992-93	107.6	1 458.9	94.5	90.7	1.2	69.5	12.1	454.3
1993-94	128.1	1 565.9	87.9	93.4	0.0	57.5	13.4	316.5
1994-95	59.4	1 483.8	22.9	97.4	0.0	45.3	14.3	350.6
1994								
December	23.3	369.9	0.0	23.9	0.0	8.9	3.7	83.7
1995								
March	3.4	301.3	0.0	18.4	0.0	9.6	3.2	90.5
June	3.9	415.8	0.0	26.5	0.0	15.8	4.2	86.2
September	4.5	463.0	0.0	21.9	0.0	11.2	4.1	93.6
December	4.4	416.0	0.0	29.7	0.0	6.8	4.1	98.1
1996								
March	3.3	326.9	0.0	24.1	0.0	11.4	3.4	84.8

(Source: Tasmania—Development and Resources)

24

SAWMILLS AND PLYWOOD MILLS: LOGS DELIVERED AND TIMBER PRODUCED, TASMANIA ('000 m³)

Year or quarter	Tasmanian-grown logs delivered					Sawn, peeled and sliced timber produced ¹				
	Hardwoods		Softwoods			Hardwoods		Softwoods		
	Eucalypts	Other hardwoods ²	Plantation ³	Natives ⁴	Total	Eucalypts	Other hardwoods ²	Plantation ³	Natives ⁴	Total
1992-93	554.5	13.0	312.8	2.8	883.2	188.9	2.9	131.6	0.7	324.1
1993-94	584.3	15.3	299.2	1.5	900.4	203.5	3.1	141.0	0.5	348.0
1994-95	653.1	12.6	304.9	2.8	973.4	212.5	4.3	142.7	0.6	360.1
1994										
March	140.0	5.0	77.4	0.4	222.8	46.5	0.6	38.1	0.1	85.3
June	149.4	4.5	76.1	0.4	230.4	52.1	1.1	34.1	0.2	87.5
September	170.2	3.8	76.3	0.6	250.9	59.5	1.2	35.1	0.1	95.9
December	163.0	3.7	68.8	0.3	235.8	55.2	1.0	36.1	0.2	92.5
1995										
March	132.3	3.0	82.5	1.1	218.9	44.5	1.0	37.0	0.1	82.6
June	187.6	2.1	77.4	0.7	267.8	53.4	1.1	34.6	0.1	89.2
September	182.6	1.7	79.6	0.2	264.2	54.4	1.3	35.8	0.1	91.6
December	137.8	1.4	69.9	0.2	209.4	48.1	1.0	35.8	0.2	85.2
1996										
March	135.4	6.4	97.7	0.3	239.8	40.7	0.9	40.9	0.1	82.7

¹ Includes plywood, veneer and sliced timber production converted to an equivalent cubic measurement.

² Includes blackwood, myrtle, sassafras etc.

³ Radiata pine.

⁴ Includes Huon pine, celery top pine and King William pine.

(Source: ABS unpublished data.)

25

CHIPPING AND GRINDING OF WOOD¹, TASMANIA

Year or quarter	Materials used ('000 m ³) ³			Chipped and ground wood production ('000 tonnes green weight)
	Producing locations (no.) ²	Logs delivered ⁴	Sawmill offcuts	
1992-93	31	3 350.6	295.8	3 565.8
1993-94	30	3 448.8	339.8	3 726.1
1994-95	31	4 064.1	394.2	4 343.1
1994				
March	31	818.3	71.3	868.3
June	30	841.6	83.3	944.0
September	30	939.8	86.3	991.3
December	31	1 065.8	92.0	1 115.4
1995				
March	31	1 090.6	95.7	1 177.1
June	31	967.9	120.1	1 059.3
September	31	935.6	118.2	1 044.1
December	31	932.1	104.6	939.9
1996				
March	32	842.6	109.8	958.0

¹ Both hardwoods and softwoods, separate details are not available.

² Capable of producing at end of year or actually producing during quarter.

³ Data reported by weight, converted to cubic measure by the factor 0.95 m³ per tonne.

⁴ Includes log equivalent of limbwood and billets.

(Source: ABS unpublished data.)

26

LOGS DELIVERED FOR MILLING OR CHIPPING, TASMANIA ('000 m³)

Year or quarter	Sawmilling and plywood milling			Chipping and grinding ¹			Total		
	Crown land ²	Private land	Total	Crown land ²	Private land	Total	Crown land ²	Private land	Total
1992-93	698.9	184.3	883.2	1 753.4	1 597.2	3 350.6	2 452.3	1 781.5	4 233.7
1993-94	696.5	203.9	900.4	1 697.0	1 751.8	3 448.8	2 393.5	1 955.7	4 349.2
1994-95	780.3	193.2	973.4	1 966.8	2 097.3	4 064.1	2 747.1	2 290.4	5 037.6
1994									
March	170.9	51.9	222.8	393.7	424.6	818.3	564.6	476.5	1 041.1
June	182.2	48.3	230.4	397.7	443.9	841.6	579.9	492.2	1 072.0
September	199.8	51.1	250.9	481.0	458.8	939.8	680.8	509.9	1 190.7
December	180.6	55.2	235.8	467.9	597.8	1 065.8	648.5	653.0	1 301.6
1995									
March	184.7	34.2	218.9	480.3	610.3	1 090.6	665.0	644.5	1 309.5
June	215.2	52.7	267.8	537.6	430.3	967.9	752.8	483.0	1 235.8
September	212.5	51.7	264.2	438.2	497.4	935.6	650.6	549.2	1 199.8
December	163.9	45.4	209.4	388.3	543.8	932.1	552.2	589.3	1 141.5
1996									
March	200.8	39.0	240.0	405.3	437.3	842.6	606.1	476.3	1 082.4

¹ Logs used are generally below sawmilling standard; includes log equivalent of limbwood and billets.

² Comprises all areas (including concession areas) from which royalties are payable to Forestry Tasmania.
(Source: ABS unpublished data.)

27

BUILDING APPROVALS, TASMANIA

<i>New residential building</i>									
<i>Year or month</i>	<i>No. of houses</i>	<i>No. of other residential buildings³</i>	<i>Total no. of dwelling units</i>	<i>Value of total dwelling units</i>	<i>Conversions etc.</i>	<i>Value of alterations and additions¹ to residential building</i>	<i>Value of non-residential building²</i>		<i>Total value of building</i>
							<i>Private</i>	<i>Total</i>	
				<i>\$'000</i>	<i>no.</i>	<i>\$'000</i>	<i>\$'000</i>	<i>\$'000</i>	<i>\$'000</i>
1992-93	2 956	1 138	4 094	275 262	n.a.	33 050	62 416	103 107	411 419
1993-94	3 113	1 034	4 147	301 963	11	39 522	81 251	145 922	487 407
1994-95	2 576	596	3 172	244 623	14	39 963	117 984	161 567	446 152
1993									
May	233	73	306	21 699	—	2 189	2 822	3 369	27 257
1995									
May	211	40	251	20 201	—	2 922	12 247	14 290	37 413
1996									
February	172	25	197	16 763	—	3 839	7 054	13 327	33 929
March	138	27	165	13 759	—	2 846	9 481	12 509	29 113
April	141	104	245	22 811	1	3 669	9 953	11 840	38 321
May	143	32	175	14 219	—	3 014	8 087	32 308	49 541

¹ Valued at \$10,000 and over.

² Comprises non-residential building (new plus alterations and additions) valued at \$50,000 and over.

³ New individual dwelling units (e.g. flats, home units and villa units).

(Source: *Building Approvals, Tasmania*, ABS catalogue number 8731.6.)

28

DWELLING COMMENCEMENTS, TASMANIA

<i>New residential building</i>								
<i>Year or month</i>	<i>No. of houses</i>					<i>Total houses</i>	<i>No. of other residential buildings¹</i>	<i>Total no. of dwelling units</i>
	<i>Double brick</i>	<i>Brick veneer</i>	<i>Fibre cement</i>	<i>Timber</i>	<i>Other and not stated</i>			
1992-93	277	1 933	103	447	65	2 825	1 129	3 954
1993-94	306	2 120	103	441	79	3 049	973	4 022
1994-95	132	1 816	93	402	62	2 505	645	3 150
1993								
April	17	166	5	38	4	230	68	298
1995								
April	13	111	6	35	3	168	29	197
1996								
January	18	104	7	18	9	156	54	210
February	13	98	11	21	12	155	11	166
March	25	78	6	20	14	143	14	157
April	24	71	7	23	6	131	130	261

¹ New individual dwelling units (e.g. flats, home units and villa units).

(Source: *Dwelling Unit Commencements Reported by Approving Authorities, Tasmania*, ABS catalogue number 8741.6.)

29

BANKING STATISTICS, TASMANIA^{1, 2} (\$m)

Month	Deposits				
	Current bearing interest	Current – not bearing interest	Fixed	Investment savings accounts	Statement savings accounts
1995					
May	544	281	1 599	560	186
June	545	285	1 549	553	186
July	568	275	1 572	552	188
August	580	270	1 594	550	189
September	599	263	1 673	549	192
October	605	258	1 690	547	189
November	620	270	1 672	546	190
December	628	279	1 659	546	191
1996					
January	646	272	1 646	546	190
February	665	265	1 639	544	174
March	690	271	1 657	550	160
April	689	270	1 693	547	160
May	674	262	1 697	541	158

29

BANKING STATISTICS, TASMANIA^{1, 2} (\$m) –continued

Month	Deposits – continued			Loans ³
	Passbook/School savings accounts	Other	Total	
1995				
May	203	132	3 505	4 131
June	199	132	3 449	4 166
July	198	128	3 480	4 231
August	194	130	3 507	4 276
September	191	131	3 596	4 304
October	189	132	3 609	4 298
November	185	129	3 612	4 349
December	177	127	3 607	4 374
1996				
January	175	127	3 601	4 372
February	171	127	3 585	4 422
March	171	128	3 626	4 450
April	168	130	3 657	4 471
May	164	127	3 623	4 511

¹ Due to changes to the *Banking Act 1959* in December 1989, which removed the distinction between trading and savings banks, figures previously published in this table are no longer comparable with those shown above.

² Details are the averages of weekly figures for each month. The figures are derived from returns submitted by banks authorised under the *Banking Act* together with similar returns voluntarily submitted by the State banks; they exclude the Reserve Bank.

³ Excludes non-resident loans.

(Source: Reserve Bank of Australia.)

30

PRIVATE NEW CAPITAL EXPENDITURE BY TYPE OF ASSET, TASMANIA¹ (\$m)

Year or quarter	New buildings and structures	Equipment, plant, and machinery	Total
1992–93	104	342	446
1993–94	100	341	441
1994–95	133	503	636
1995			
March	46	129	175
June	41	170	211
September	51	95	146
December	r 47	r 92	r 139
1996			
March	44	96	140

¹ Estimates based on a sample survey and therefore subject to sampling variability. Covers selected industries only—mining, manufacturing, finance, property and other selected industries.

(Source: *State Estimates of Private New Capital Expenditure*, ABS catalogue number 5646.0.)

31 PASSENGER ARRIVALS AND DEPARTURES, TASMANIA¹

Period	Arrivals				Total departures ²	Cruise ships	
	By air					Arrivals	Departures
	Interstate	Inter-national	By sea	Total			
1992	652 092	4 428	114 969	771 489	761 109	4 608	4 608
1993	694 244	5 144	115 381	814 769	814 835	2 033	2 033
1994	745 508	4 166	128 644	878 318	880 936	6 592	6 592
1995	811 784	3 982	116 869	932 635	931 278	6 199	6 199
1995							
March	68 790	351	13 087	82 228	86 348	659	659
1996							
January	83 246	384	12 756	96 386	114 160	2 806	2 806
February	74 239	377	10 926	85 542	79 106	1 630	1 630
March	71 838	503	10 998	83 359	89 056	—	—

¹ The following persons are not included in these statistics: passengers under three years of age accompanied by an adult; passengers travelling on chartered flights with minor carriers; passengers travelling on private or VIP flights; and passengers from or departing for overseas other than direct flights to New Zealand.

² The proportion of departing passengers who were visitors was shown to be about 58% in the 1981 Tasmanian Visitor Survey, 55% in the 1984 Tasmanian Visitor Survey, 53% in the 1986 Tasmanian Visitor Survey, 65% in the 1990 Tasmanian Visitor Survey, 60% in the 1994 survey, and 58% in the 1995 Tasmanian Visitor Survey.

(Source: Department of Tourism)

32 TOTAL PASSENGER ARRIVALS BY AIR AND SEA INTO TASMANIA

Period	Original	Seasonally adjusted ²	Trend
1995			
March	82 228	76 009	76 695
1996			
January	96 386	77 172	77 586
February	85 542	76 566	77 202
March	83 359	77 720	77 045

² There is an annual recalculation of seasonal adjustment factors to include the most recent year's arrivals. This occurs at the end of each financial year and may cause revisions to previously published seasonally adjusted and trend figures. A full time series of seasonally adjusted and trend series from January 1971 is available on request, telephone (002) 20 5870.

(Source: Department of Tourism. ABS unpublished data.)

HOTELS, MOTELS, ETC. WITH FACILITIES

Period	Establishments No.	Guest rooms No.	Room nights		Room occupancy rate %	Takings from accommodation \$'000
			Seasonally adjusted ¹ No.	Trend estimates ¹ No.		
March quarter						
1994	178	5 334	n.a.	n.a.	66.2	22 812
1995	177	5 380			68.2	24 963
1996	180	5 520			67.1	26 267
1994						
January	n.a.	n.a.	84 376	85 374	60.8	7 294
February	n.a.	n.a.	85 051	86 504	65.7	7 001
March	178	5 334	86 028	87 624	72.2	8 518
1995						
January	n.a.	n.a.	84 462	86 826	61.8	7 971
February	n.a.	n.a.	89 522	86 896	69.2	7 713
March	177	5 380	89 885	87 220	73.7	9 279
1996						
January	n.a.	n.a.	88 997	90 384	62.6	8 575
February	n.a.	n.a.	91 402	90 016	69.1	8 514
March	180	5 520	87 965	89 676	69.8	9 178

HOLIDAY UNITS

Period	Establishments No.	Units No.	Unit nights		Unit occupancy rate %	Takings from accommodation \$'000
			Seasonally adjusted ¹ No.	Trend estimates ¹ No.		
March quarter						
1994	53	797	n.a.	n.a.	70.1	3 725
1995	55	867			72.7	4 391
1996	54	830			64.2	3 835
1994						
January	n.a.	n.a.	12 747	12 684	75.7	1 407
February	n.a.	n.a.	12 716	13 013	65.5	1 087
March	53	797	13 086	13 314	68.6	1 231
1995						
January	n.a.	n.a.	14 001	14 297	75.9	1 649
February	n.a.	n.a.	14 704	14 601	70.1	1 334
March	55	867	14 828	14 780	71.9	1 408
1996						
January	n.a.	n.a.	12 240	12 661	69.0	1 477
February	n.a.	n.a.	12 353	12 515	61.8	1 174
March	54	830	12 136	12 319	61.8	1 184

CARAVAN PARKS

Period	Establishments No.	Sites and cabins ² No.	Site nights		Site occupancy rate %	Takings from accommodation \$'000
			Seasonally adjusted No.	Trend estimates No.		
March quarter						
1994	70	6 715	n.a.	n.a.	36.4	2 595
1995	75	6 834			39.2	2 886
1996	72	6 524			42.1	3 126
1994						
January	n.a.	n.a.	58 730	59 316	42.7	1 050
February	n.a.	n.a.	58 669	59 631	35.1	792
March	70	6 715	59 949	60 278	31.4	753
1995						
January	n.a.	n.a.	63 575	65 044	45.5	1 156
February	n.a.	n.a.	65 183	65 070	38.1	887
March	75	6 834	64 164	65 209	34.0	844
1996						
January	n.a.	n.a.	64 854	66 169	48.5	1 249
February	n.a.	n.a.	65 465	66 613	40.4	1 000
March	72	6 524	69 259	67 004	37.3	878

¹ Seasonally adjusted and trend re-adjusted because of yearly seasonal re-analysis.
(Source: *Tourist Accommodation*, ABS catalogue number 8635.6.)

² At end of quarter.

34

REGISTRATIONS OF NEW MOTOR VEHICLES, TASMANIA¹

Year or month	Passenger vehicles	Other vehicles ²	Total (excl. motor cycles)	Vehicles registered by vehicle rental businesses ³	Motor cycles
1993	10 019	2 478	12 497	1 507	440
1994	10 543	2 837	13 380	1 708	376
1995	10 919	2 874	13 793	1 952	393
1994					
May	742	275	1 017	1	28
1995					
May	973	383	1 356	6	30
June	846	368	1 214	16	25
July	772	257	1 029	65	21
August	1 061	208	1 269	245	28
September	1 076	184	1 260	373	36
October	1 072	208	1 280	301	35
November	702	151	853	62	32
December	1 489	245	1 734	842	37
1996					
January	670	203	873	5	36
February	777	212	989	62	48
March	764	197	961	3	33
April	659	159	818	—	30
May p	916	286	1 202	3	44

¹ Includes State and Commonwealth Government-owned motor vehicles other than those belonging to the defence services. Excludes tractors, plant and equipment, caravans and trailers.

² Comprises utilities, panel vans, rigid and articulated trucks and other truck-type vehicles (i.e. motor vehicles designed for purposes other than freight carrying, e.g. campervans, tow trucks, ambulances and hearses) and buses.

³ These figures are included in previous columns.

(Source: *Motor Vehicle Registrations Australia*, ABS catalogue number 9301.0. ABS unpublished data.)

35

TURNOVER OF RETAIL ESTABLISHMENTS AT CURRENT PRICES, TASMANIA¹

Period	Original \$m	Trend estimates ²	
		\$m	% change from corresponding month of previous year
1994			
May	225.9	231.6	6.3
1995			
May	229.0	237.1	2.4
June	226.6	237.3	2.5
July	225.3	237.1	2.5
August	230.5	236.9	2.6
September	222.3	237.4	3.1
October	236.0	238.6	4.1
November	251.6	240.3	5.1
December	320.5	242.2	5.8
1996			
January	240.5	244.1	6.1
February	233.5	245.7	5.9
March	241.3	247.1	5.5
April	237.8	248.4	5.2
May	250.3	249.7	5.3

¹ Survey has been re-designed—see Information Paper (8511.0).

² Trend estimates revised each month.

(Source: *Retail Trade, Australia*, ABS catalogue number 8501.0.)

	NSW	Vic.	Qld	SA	WA	Tas.	Aust. ¹
Population							
Estimated resident population, December 1995 ('000) p	6 155.0	4 521.8	3 316.5	1 475.9	1 747.0	473.2	18 173.6
Proportion of Australian population, December 1995 (%) p	33.9	24.9	18.2	8.1	9.6	2.6	100.0
Population growth rate, 12 months to December 1995 (%) p	1.3	0.8	2.6	0.3	1.9	0.1	1.3
Labour Force							
Employment growth, 12 months to June 1996 (trend series) (%)							
Males	0.7	1.5	2.9	0.2	0.0	1.8	1.2
Females	1.2	0.3	- 1.6	1.8	- 0.1	- 1.2	0.3
Persons	0.9	1.0	1.0	0.9	0.0	0.5	0.8
Unemployment rate (trend series), June 1996 (%)	8.1	8.5	9.2	9.3	7.7	10.6	8.6
Unemployment growth, 12 months to June 1996 (trend series) (%)	5.9	- 2.2	4.9	- 5.8	6.7	10.6	3.0
Participation rate (trend series), June 1996 (%)	62.1	63.3	64.3	62.0	65.8	61.1	63.4
Average weekly overtime worked per employee, May 1996 (hours)	1.2	1.2	1.2	1.1	1.1	0.9	1.1
Job vacancy rate, May 1996 (%)	1.1	0.7	0.6	0.5	0.9	0.5	0.8
Working days lost through industrial disputes, 12 months to April 1996 (days per '000 employees)	99	65	108	40	168	20	90
Wages and Prices							
Average weekly total earnings, full-time adult employees (trend series) February 1996 (\$)							
Males	809.3	754.3	694.4	704.4	802.6	687.0	764.6
Females	626.9	597.6	565.7	567.1	584.7	566.8	600.5
Persons	742.9	702.2	647.5	660.1	724.7	647.8	706.6
Average weekly total earnings, full-time adult employees, growth rate, 12 months to February 1996 (%)	5.3	3.8	1.9	1.7	6.1	2.3	4.1
Consumer price index, all groups, annual growth to June quarter 1996 (%)	3.9	2.6	3.0	2.7	2.6	3.0	3.1
Building							
% change in the number of new residential dwelling units approved in 12 months ended May 1996, over the same period previous year	- 22.6	- 22.3	- 34.0	- 40.2	29.5	- 21.9	- 27.8
Finance and Retail Trade							
% change in private new capital expenditure, 12 months ended March 1996, over the same period previous year	4.8	14.3	12.3	- 12.6	11.4	12.5	9.4
% change in trend estimates turnover of retail establishments, May 1996 (change from corresponding month of the previous year)	9.2	4.4	3.0	1.8	7.5	5.3	5.9
Transport							
% change in number of new motor vehicles (excluding motorcycles) registered 12 months ended May 1996, over the same period previous year	- 4.5	3.0	0.1	1.7	0.5	- 4.0	- 0.7
Agriculture							
% change in the number of livestock slaughtered 12 months ended May 1996 over the same period previous year							
Cattle and calves	- 3.0	3.1	- 7.8	- 5.2	- 1.6	- 0.8	- 2.8
Sheep and lambs	- 14.4	- 10.8	- 10.1	- 20.6	- 5.2	- 22.4	- 13.4
Tourism							
Room occupancy rates for hotels, motels etc, with facilities, March quarter 1996 (%)	61.1	57.7	58.7	55.1	59.5	67.1	59.0
Australian National and State Accounts							
% change in GSP (GDP), Average 1989-90 Prices Trend Series							
Dec. qtr 1995 to Mar. qtr 1996	1.0	1.4	0.6	0.9	1.1	0.9	1.0
Mar. qtr 1995 to Mar. qtr 1996	2.5	4.3	2.4	3.7	3.5	2.1	3.4

¹ Australian totals include the ACT and NT.

EXPLANATORY NOTES

INTRODUCTION

1 This publication contains latest figures for a comprehensive range of economic indicators. Statistics shown in this publication are the latest available at the date of preparation and may be subject to revision in subsequent issues. In a number of cases figures appearing in this publication are preliminary and are subject to revision in subsequent issues. Reference should therefore always be made to the latest issue or to the statistical publication on the specific subject.

SEASONAL ADJUSTMENT AND TREND ESTIMATION

2 Seasonal adjustment is a means of removing the estimated effects of normal seasonal variation from the series so that the effects of other influences on the series can be more clearly recognised. Seasonal adjustment does not aim to remove the irregular or non-seasonal influences which may be present in any particular month. This means that month-to-month movements of the seasonally adjusted estimates may not be reliable indicators of trend behaviour.

3 The smoothing of seasonally adjusted series reduces the impact of the irregular components of the seasonally adjusted series and creates trend estimates. These trend estimates are derived by applying a 13-term Henderson-weighted moving average to all months except the last six. The last six monthly trend estimates are obtained by applying surrogates of the Henderson average to the seasonally adjusted series. Trend series are used to analyse the underlying behaviour of the series over time.

4 While this smoothing technique enables estimates to be produced for the latest month, it does result in revisions to the most recent months as additional observations become available. Generally, subsequent revisions become smaller and after 3 months have a negligible impact on the series. Revisions also occur as a result of the annual review of seasonal factors.

5 Users may wish to refer to the ABS Publication *A Guide to Interpreting Time Series – Monitoring 'Trends' – An Overview* (1348.0) for more detailed information on smoothing seasonally adjusted time series data.

RELATED PUBLICATIONS

6 Current publications produced by the ABS are listed in the *Catalogue of Publications and Products* (1101.0). The ABS also issues, on Tuesdays and Fridays, the *Release Advice* (1105.0) which lists publications to be released in the next few days. The *Catalogue* and *Release Advice* are available from any ABS office.

UNPUBLISHED STATISTICS

7 As well as the statistics included in this and related publications, the ABS may have other relevant unpublished data available. Inquiries should be made to Information Inquiries on (002) 20 5800 or to any ABS office.

EFFECTS OF ROUNDING

8 Some figures have been rounded and discrepancies may occur between totals and sums of the component items.

SYMBOLS AND OTHER USAGES

n.a.	not available
n.y.a.	not yet available
..	not applicable
—	nil or rounded to zero
p	preliminary—figure or series subject to revision
r	figure or series revised since previous issue



ABS Catalogue No. 1303.6

ASIANIAN STATISTICAL INDICATORS AUGUST 1996

Produced by the Australian Government Publishing Service
© Commonwealth of Australia 1996

Recommended retail price: \$16.50



2130360008960
ISSN 1034-1803